

PROGRESS SET
NOT FOR
CONSTRUCTION



24 UNIT RESIDENTIAL BUILDING

WARNER, NH

PROJECT #2018.20

REVISIONS

- △
- △
- △
- △
- △
- △

DOCUMENT PHASE

Project Status

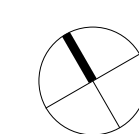
DATE ISSUED

7/12/18

VIEWS

A1.06

① FRONT VIEW
1/2" = 1'-0"



PROGRESS SET
NOT FOR
CONSTRUCTION

24 UNIT RESIDENTIAL BUILDING
WARNER, NH

PROJECT #2018.20

REVISIONS

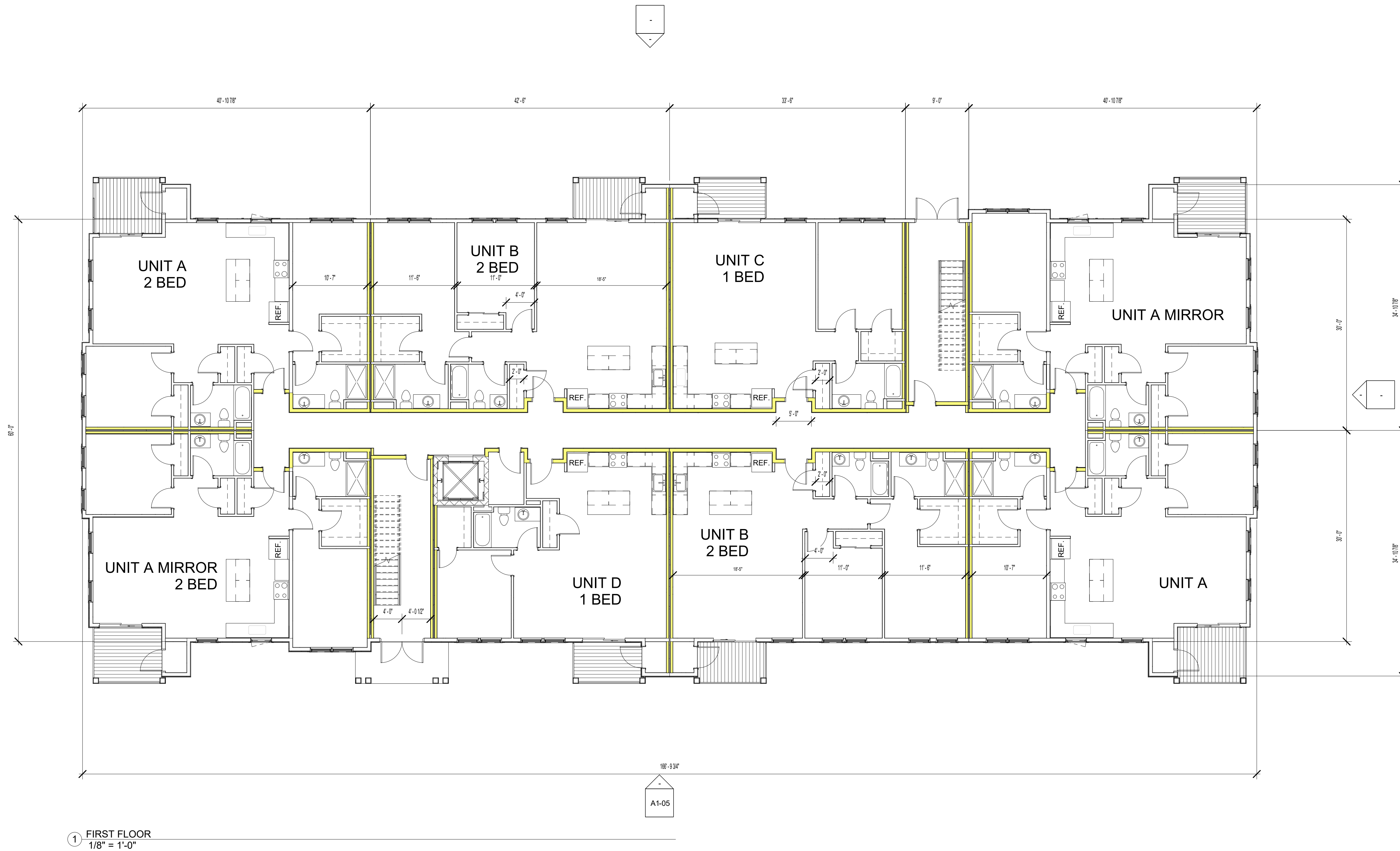
- △
- △
- △
- △
- △

DOCUMENT PHASE
Project Status

DATE ISSUED
7/12/18

FIRST FLOOR

A1.01



① FIRST FLOOR
1/8" = 1'-0"

100'-33"
A1-05

**PROGRESS SET
NOT FOR
CONSTRUCTION**

24 UNIT RESIDENTIAL BUILDING

WARNER, NH

PROJECT #2018.20

REVISIONS

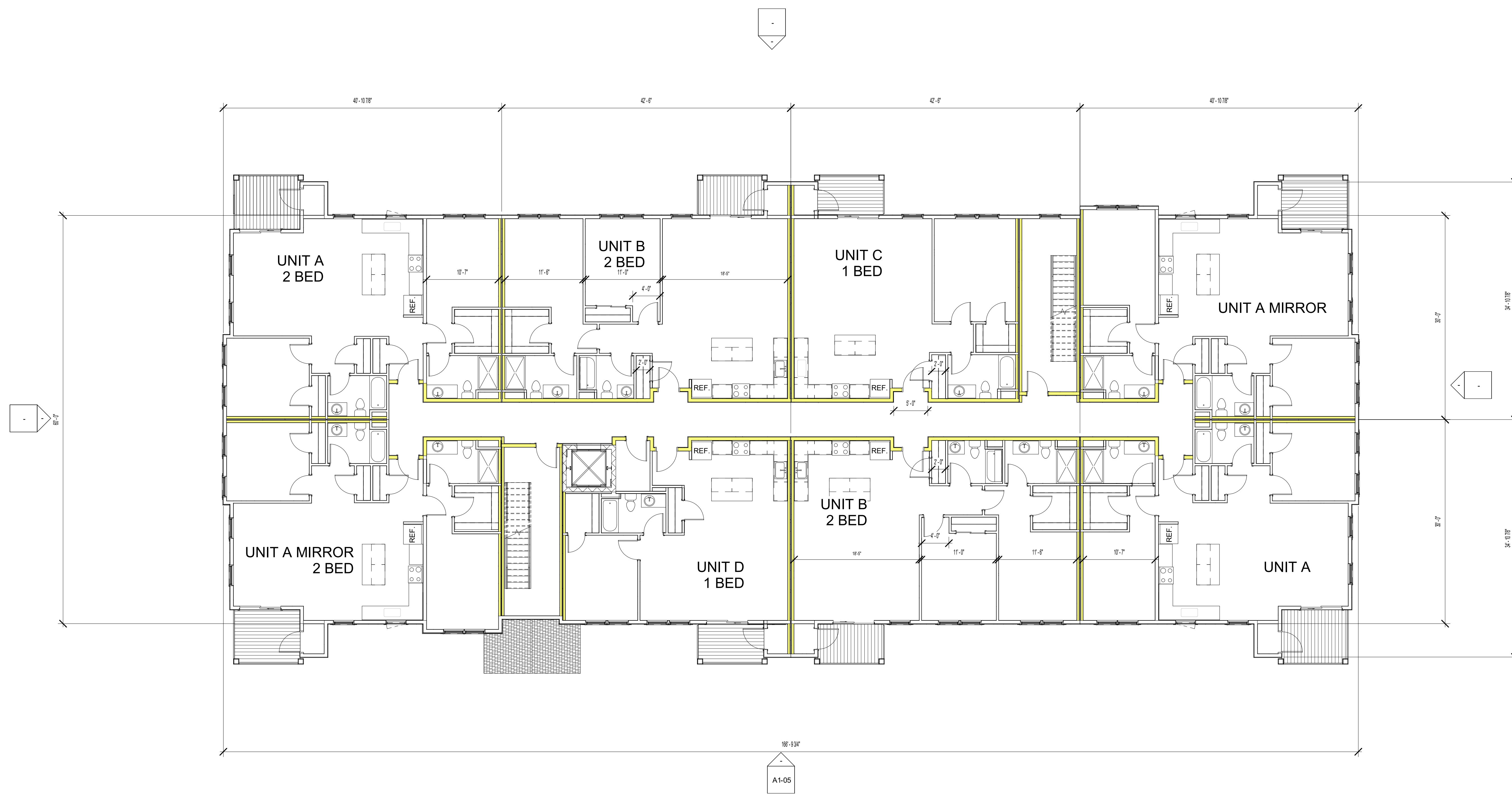
- △
- △
- △
- △
- △

DOCUMENT PHASE
Project Status

DATE ISSUED
7/12/18

SECOND FLOOR

A1.02



① SECOND FLOOR
1/8" = 1'-0"

PROGRESS SET
NOT FOR
CONSTRUCTION

24 UNIT RESIDENTIAL BUILDING

WARNER, NH

PROJECT #2018.20

REVISIONS

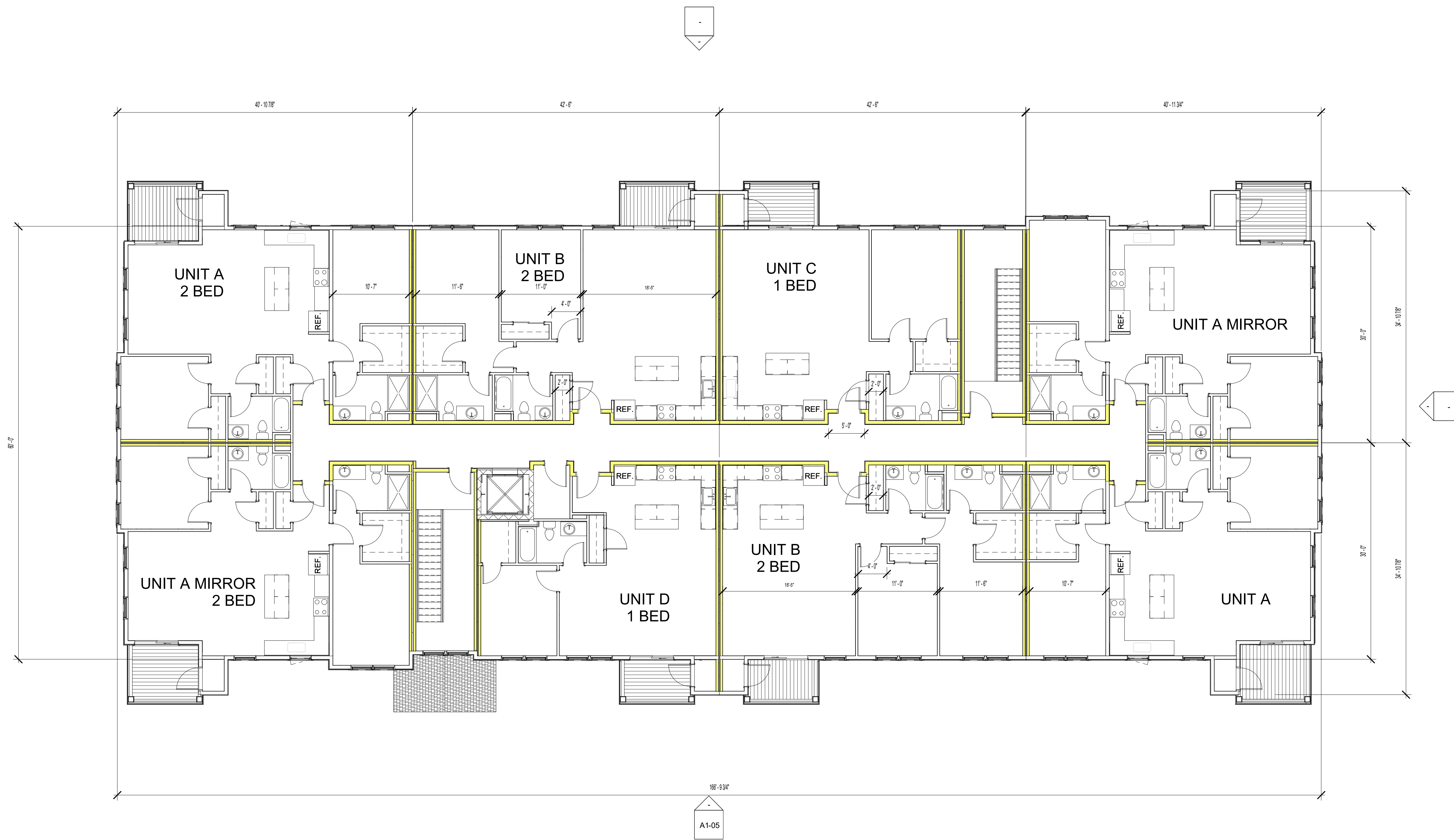
- △
- △
- △
- △
- △

DOCUMENT PHASE
Project Status

DATE ISSUED
7/12/18

THIRD FLOOR

A1.03



1 THIRD FLOOR
1/8" = 1'-0"

A1-05

**PROGRESS SET
NOT FOR
CONSTRUCTION**

24 UNIT RESIDENTIAL BUILDING

WARNER, NH

PROJECT #2018.20

REVISIONS

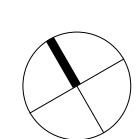
- △
- △
- △
- △
- △
- △

DOCUMENT PHASE
Project Status

DATE ISSUED
7/12/18

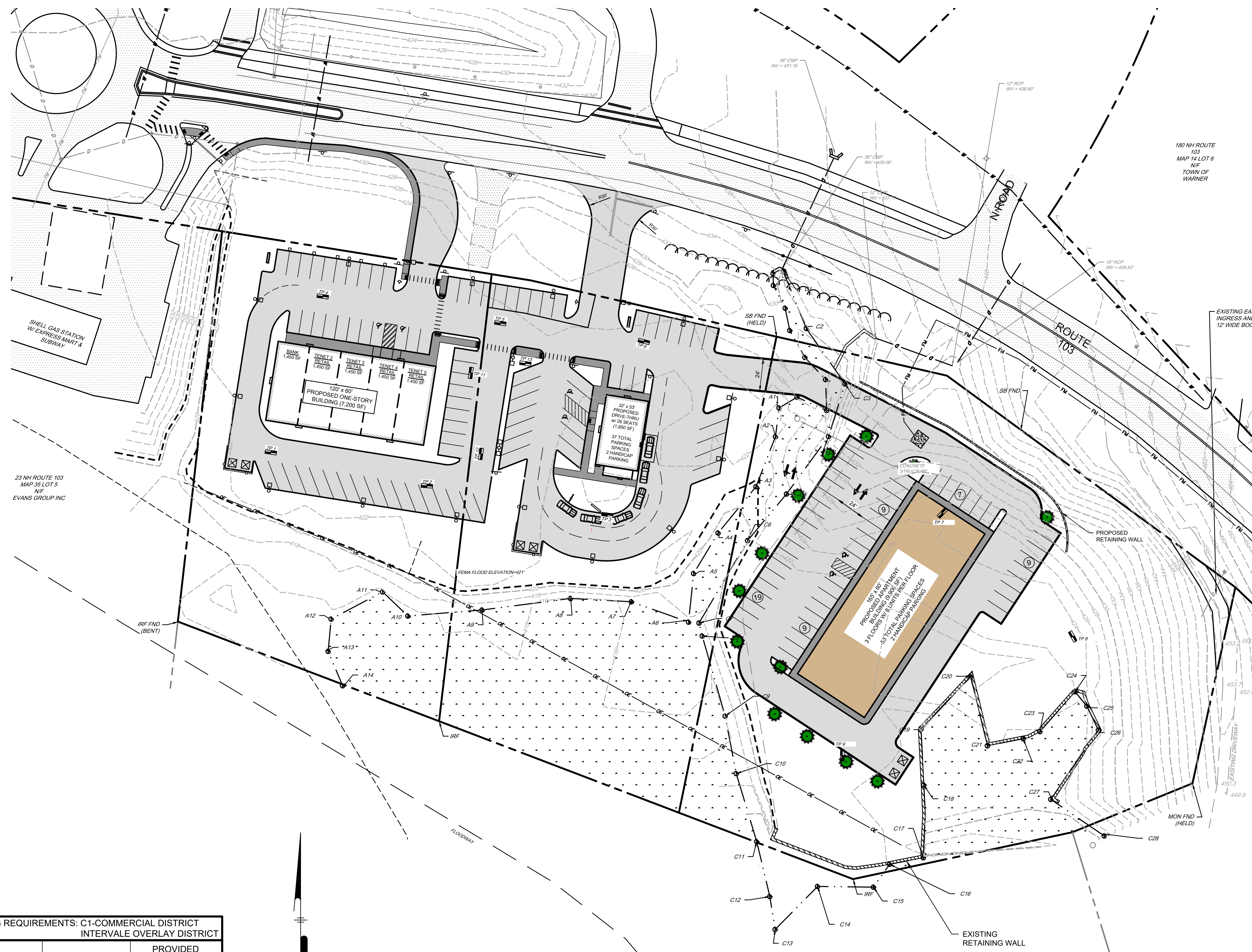
ELEVATIONS

A1.05

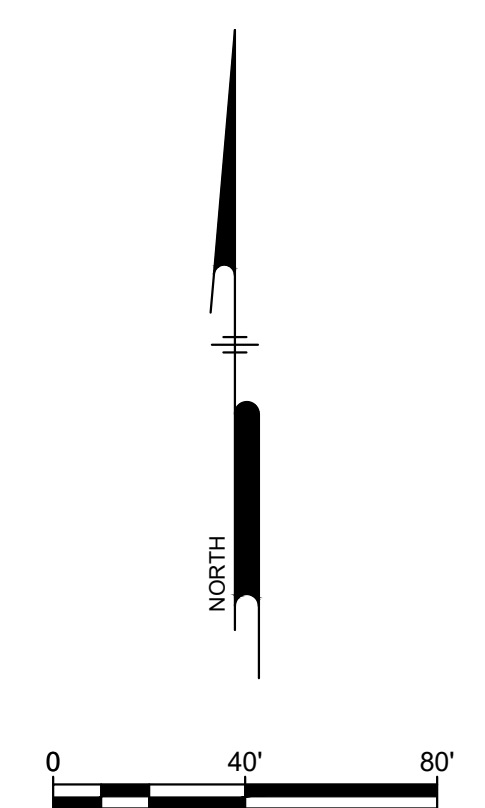


① FRONT ELEVATION
1/8" = 1'-0"

Z:\PROJECTS\COMET - DANNEBERG\BYPAS\ANETS\101.dwg PLOTTED: 7/26/2021 11:43 AM BY: CH/PC PROJECT STATUS: - PLOTSTYLE: -



ZONING REQUIREMENTS: C1-COMMERCIAL DISTRICT INTERVALE OVERLAY DISTRICT		
	REQUIRED	PROVIDED LOT 3
MIN. LOT AREA	40,000 SF	116,058 SF
MIN. LOT FRONT	200'	400'
FRONT SETBACK	40'	40'
SIDE SETBACK	25'	25'
MAX IMPERVIOUS AREA	MAX 70%	35%



CONCEPTUAL SITE PLAN
 LOT 3 - ROUTE 103 WEST, WARNER NH,
 ASSESSOR'S MAP 35 LOTS 4-1 & 4-2

OWNER: COMET, LLC
 84 RANGE ROAD, WINDHAM NH 03087

CONCEPTUAL LAYOUT PLAN

Ranger Engineering Group, Inc.
 13 Red Roof Lane, Suite 203
 Salem NH, 03079
 Tel: 978-208-1762
 rangereng.com

WARNER PLANNING BOARD CHAIRMAN: _____

DATE: _____

DATE: 2020-07-25	SCALE: 1" = 40'	SHEET 1 OF 1
---------------------	--------------------	-----------------